

Because life is

Petty<sup>TM</sup>  
Real

10 Portland Street  
Barrowford  
BB9 8PY



## For Sale

- Modern mid-terrace property
- Popular location on Portland Street, Barrowford
- Entrance vestibule
- Comfortable front lounge
- Open-plan living room and fitted kitchen

## Offers In The Region Of £155,000

- Kitchen with integrated appliances
- Two good-sized bedrooms
- Contemporary four-piece bathroom
- Low-maintenance rear yard
- Ideal for first-time buyers or investors



Situated on the ever-popular Portland Street in Barrowford, this modern mid-terrace home offers stylish and well-presented accommodation, ideal for first-time buyers, downsizers, or buy-to-let investors. The property is conveniently located close to local amenities, schools, and transport links, making it a highly practical and appealing choice.

The accommodation begins with an entrance vestibule leading into a welcoming lounge, providing a comfortable and relaxing space. Finished in a modern style, this room sets the tone for the rest of the property and offers an ideal area to unwind or entertain guests.

To the rear is an attractive open-plan living room and fitted kitchen, creating a sociable and functional living space. The kitchen is well equipped with a range of modern units and integrated appliances, offering ample worktop space and storage, while still allowing room for dining or casual seating.

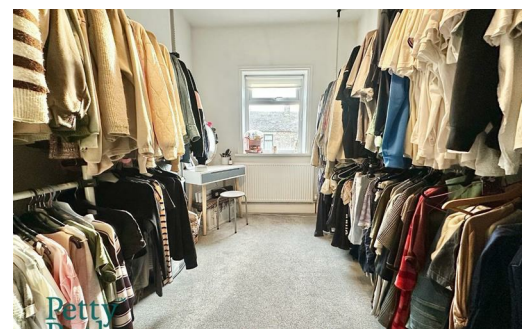
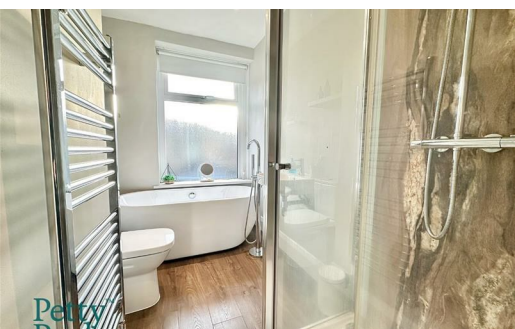
The first floor provides two good-sized bedrooms, both presented to a high standard and offering flexibility for use as bedrooms, guest rooms, or a home office. A modern four-piece bathroom completes the accommodation, featuring a stylish suite with bath, separate shower, wash basin, and WC.

Externally, the property benefits from a private rear yard, ideal for low-maintenance outdoor enjoyment. This well-appointed home combines modern living with a sought-after Barrowford location and is ready for immediate occupation.



Total area: approx. 78.6 sq. metres (845.6 sq. feet)

All floorplans provided are for guidance only. Please check all dimensions before making any decisions reliant upon them.  
Plan produced using PlanUp.



These particulars, whilst believed to be accurate are set out as a general outline only for guidance and do not constitute any part of an offer or contract. Intending purchasers should not rely on them as statements of representation of fact, but must satisfy themselves by inspection or otherwise as to their accuracy. No person in this firm's employment has the authority to make or give any representation or warranty in respect of the property.

11 Albert Road, Colne, Lancashire, BB8 0RY  
T. 01282 615900  
Barrowford.sales@pettyreal.co.uk

[www.pettyreal.co.uk](http://www.pettyreal.co.uk)